



### CERAMIC TOOLS



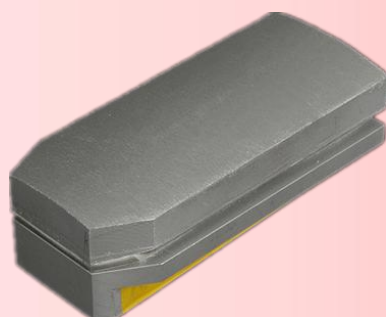
14CM MAGNESITE FICKERT ABRASIVE

| LENGTH | AVAIABLE GRIT   |
|--------|---|
| 170mm  | 14# 24# 36# 46# 60# 80# 120#<br>220# 320# 400# 600# 800#<br>1200# 1500# |



17CM MAGNESITE FICKERT ABRASIVE

| LENGTH | AVAIABLE GRIT   |
|--------|---|
| 170mm  | 14# 24# 36# 46# 60# 80# 120#<br>220# 320# 400# 600# 800#<br>1200# 1500# |



14CM METAL FICKERT ABRASIVE

| LENGTH | THICKNESS OF SEG | AVAIABLE GRIT   | ATTACHMENT       |
|--------|------------------|---|------------------|
| 140mm  | 11-12cm          | 36# 40# 50# 60#<br>70# 80# 100# 120#<br>170# 230# 270#<br>320# 400# | ALUMINUM<br>BASE |



17CM METAL FICKERT ABRASIVE

| LENGTH | THICKNESS OF SEG | AVAIABLE GRIT   | ATTACHMENT       |
|--------|------------------|---|------------------|
| 170mm  | 11-12cm          | 36# 40# 50# 60#<br>70# 80# 100# 120#<br>170# 230# 270#<br>320# 400# | ALUMINUM<br>BASE |



### L140/170MM RESIN FICKERT ABRASIVE



| LENGTH         | AVAILABLE GRIT  | ATTACHMENT   |
|----------------|---|--------------|
| 140mm<br>170mm | 50# 80# 100# 120# 150# 180#<br>240# 320# 400# 600# 800#<br>1000# 1200# 1500# 2000#<br>3000# | PLASTIC BASE |

### L140/170MM RESIN FICKERT ABRASIVE



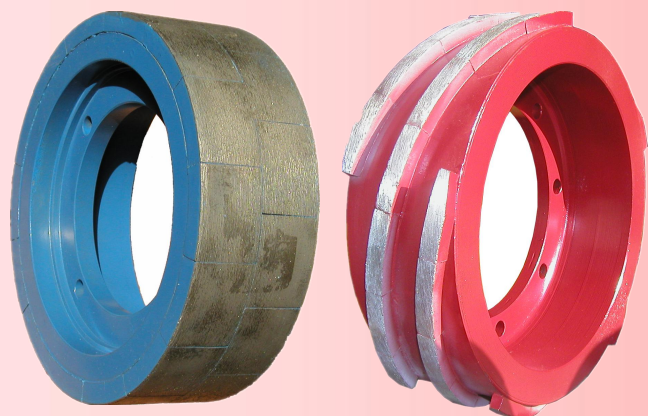
| LENGTH         | AVAILABLE GRIT  | ATTACHMENT   |
|----------------|---|--------------|
| 140mm<br>170mm | 50# 80# 100# 120# 150# 180#<br>240# 320# 400# 600# 800#<br>1000# 1200# 1500# 2000#<br>3000# | PLASTIC BASE |

### METAL EDGE CHAMFERING WHEEL



| SIZE         | SIZE OF SEG | CONNECTOR |
|--------------|-------------|-----------|
| Φ150/Φ132x12 | 17          | Φ80       |
| Φ250/Φ232x12 | 22          | Φ80       |
| Φ300/Φ282x12 | 32          | Φ80       |

### CALIBRATING WHEEL FOR MC8/MC10 MACHINE



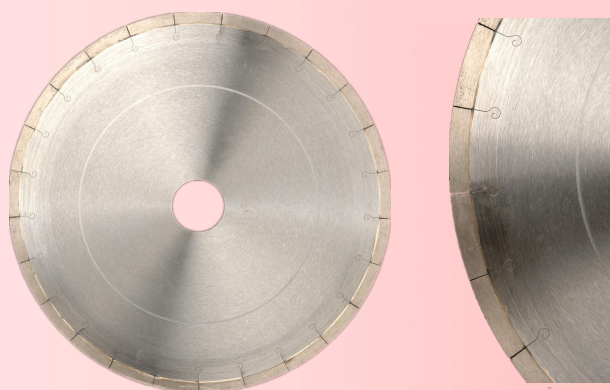
| SIZE   | SIZE OF SEG       | NO OF SEG |
|--------|-------------------|-----------|
| Φ180mm | Φ180/160x30x10(9) | 14        |





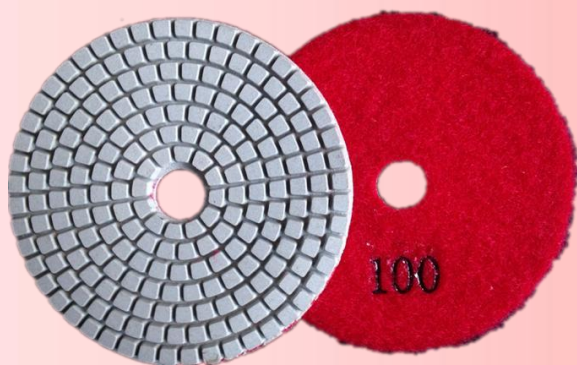
CALIBRATING ROLLER

| SIZE   | SIZE OF SEG         | NO OF SEG |
|--------|---------------------|-----------|
| Φ230mm | 42.14/39.5x10x10(9) | 143       |
|        | 42/39.7x9x10(9)     | 250       |



CIRCULAR SAW BLADE

| DIAMETER | SIZE OF SEG       | NO OF SEG | THICKNESS |
|----------|-------------------|-----------|-----------|
| Φ300     | 45.21/42.82x2.4x8 | 21        | 1.8       |
| Φ350     | 44.37/42.11x2.4x8 | 25        | 1.8       |
| Φ400     | 43.50/41.77x2.8x8 | 29        | 2.2       |



MULTIPURPOSE POLISHING PAD

| AVAILABLE SIZE    | AVAILABLE GIRT                          |
|-------------------|---|
| 3" 4" 5" 6" 7" 8" | 50# 100# 200# 400# 800# 1500#<br>3000#  |
|                   | 60# 150# 300# 500# 1000# 2000#<br>3000# |



DIAMODND RESIN POLISHING PAD

| AVAILABLE SIZE | AVAILABLE GIRT                         |
|----------------|--|
| 4" 5" 6"       | 50# 100# 200# 400# 800# 1500#<br>3000# |



**DIAMOND RESIN HARD POLISHING PAD**

| AVALIABLE SIZE | AVALIABLE GIRT                         |
|----------------|--|
| 8"             | 50# 100# 200# 400# 800# 1500#<br>3000# |